



SitePro Controller for EDACS/P25

*assured*communications®

Content

- **What is the P25 Station SitePro?**
- **Differences from EDACS to P25**
- **Programming a SitePro**

What is the P25 Station SitePro?

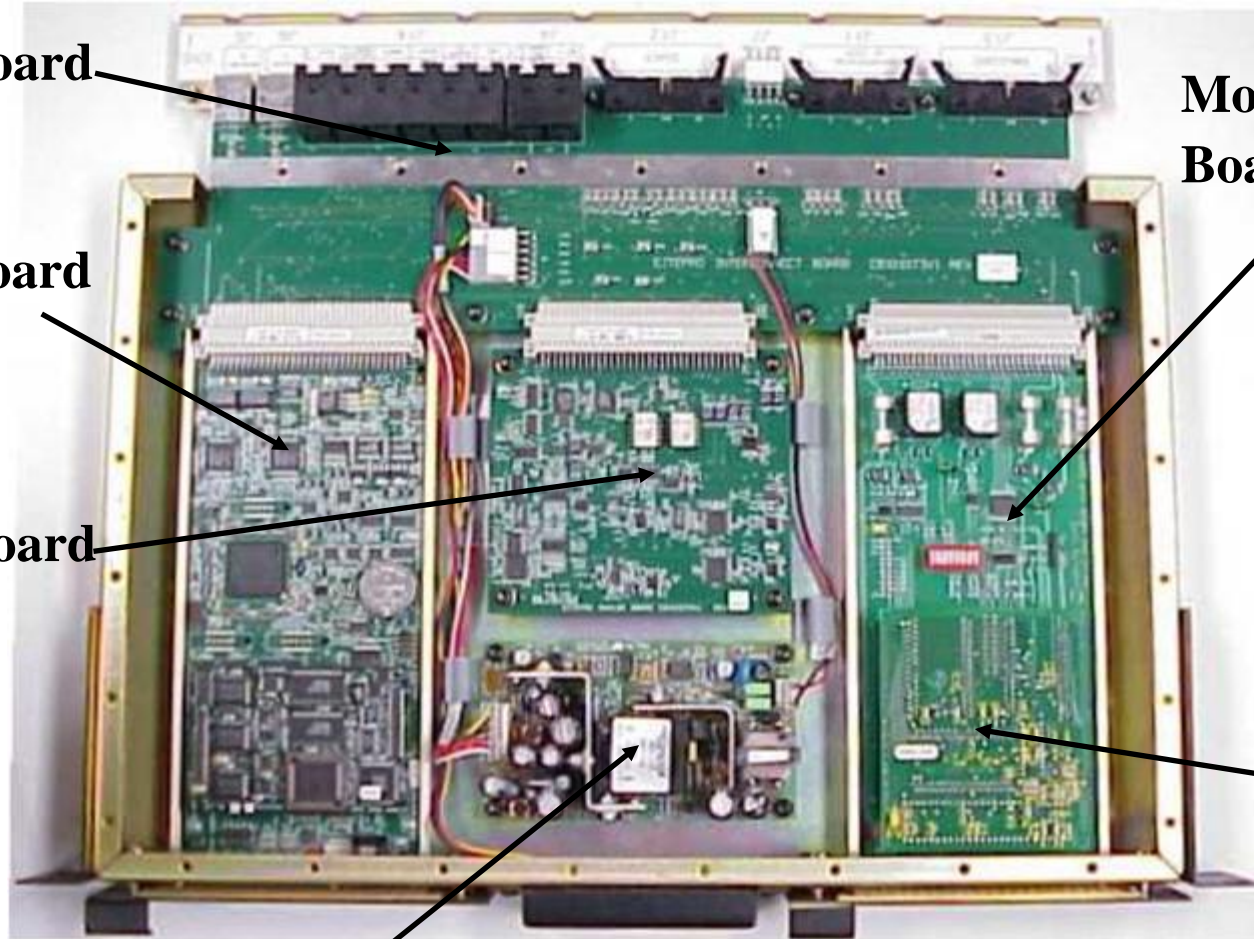
- **The Station SitePro connects the MASTR III – P25IP base station to the P25IP network via IP-based packetized data over Ethernet ports.**
- **Its primary purpose is to provide digital signaling and transmitter control of the associated base station.**
- **The Station SitePro interprets and directs inbound calls, processes these calls, and issues appropriate commands about how calls are to be handled.**

SitePro Controller Front View



- **8 character display**
- **POWER ON indicator**
- **LEDs on Controller board**
 - 4 Red LEDs provide indication of operation
 - 2 Green LEDs indicate when connected to ETH0 or ETH1

EDACS SitePro Controller Top View (Open)



Interface Board

Modem Interface Board

Controller Board

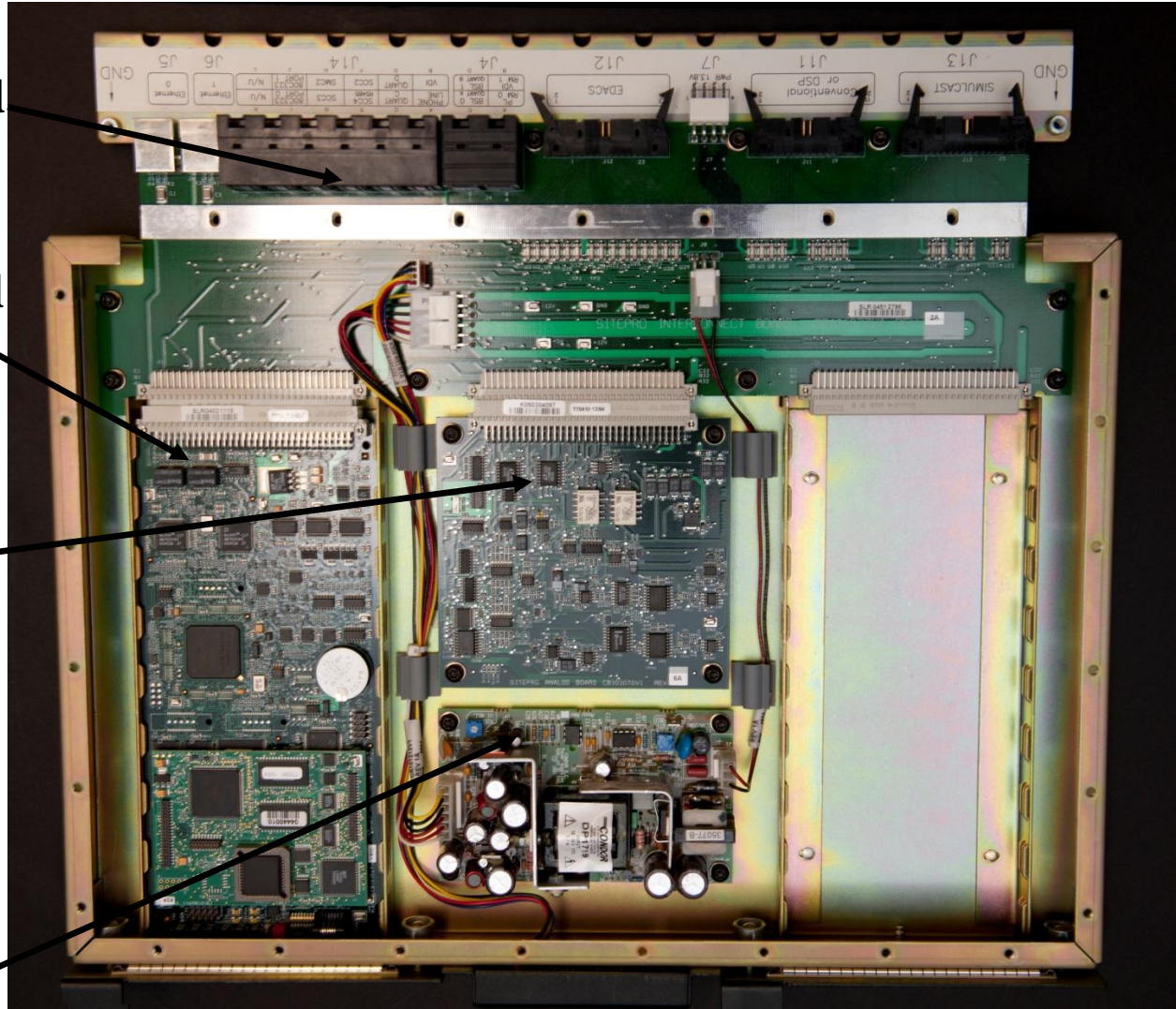
Analog Board

Audio Modem

Power Supply

P25 SitePro Controller Top View (Open)

Interface Board

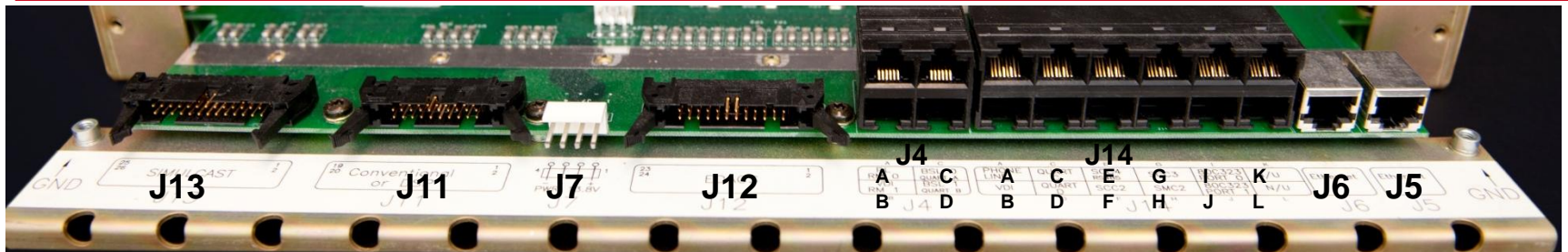


Controller Board

Analog Board

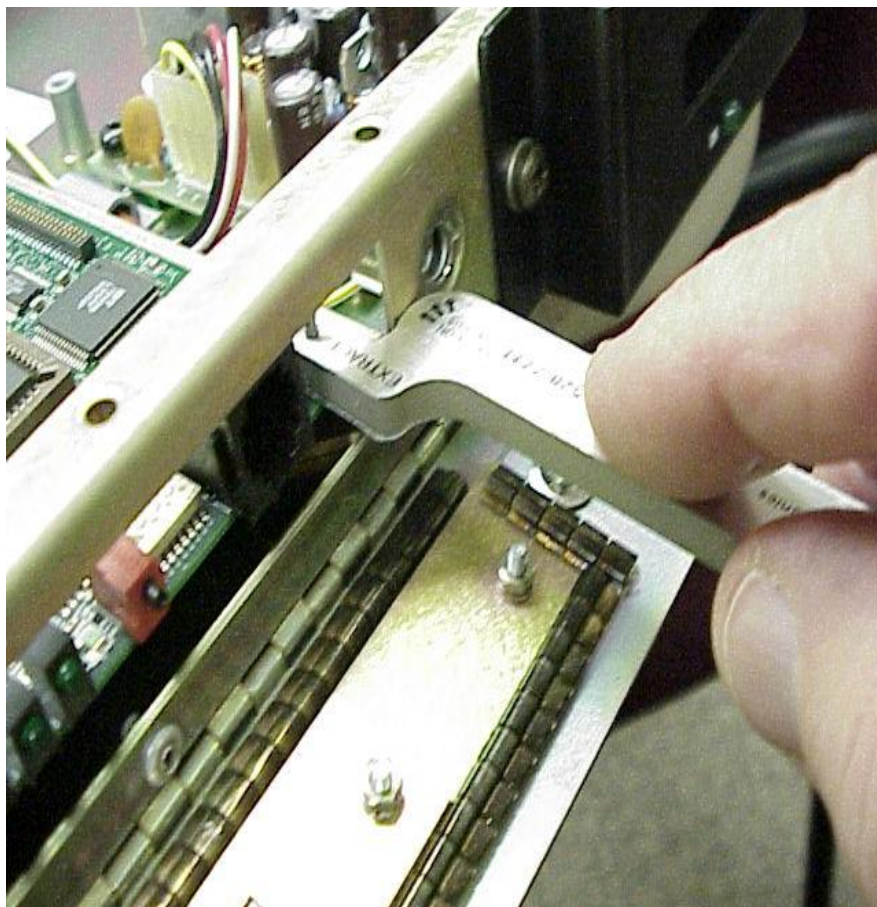
Power Supply

Connections

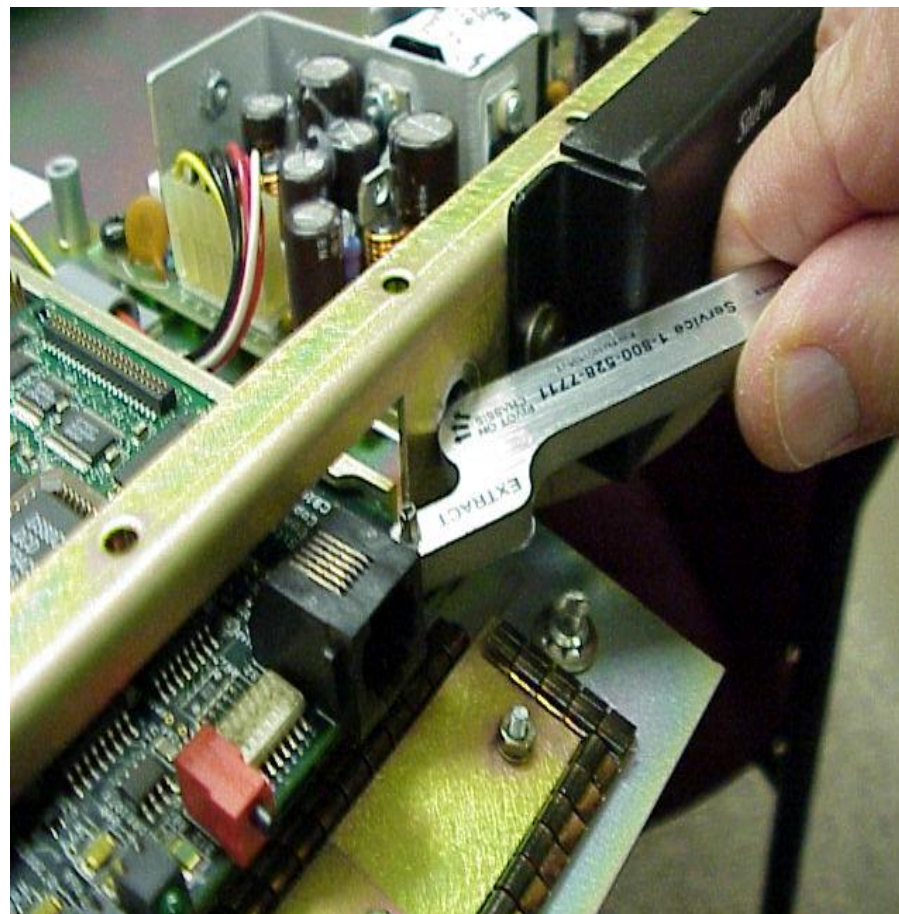


- **J4 C** **BSL 0 (Primary Trunking Operation – Non EA EDACS) Provides Sync Pulse for CC selection in P25.**
- **J4 D** **BSL 1 (Redundant)**
- **J5** **Ethernet 0 (Management LAN)**
- **J6** **Ethernet 1 (Trunking Operation – EA / P-LAN – P25)**
- **J7** **4-pin Power (13.8 Vdc)**
- **J11** **20-pin for Conventional/DSP system**
- **J12** **24-pin connector for EDACS/ProVoice system**
- **J13** **26-pin connector for EDACS Simulcast system**
- **J14** **Twelve RJ-11 connectors - debug/spare ports except for J14-G used for P25 connection to DSP.**

Maintenance Extraction Tool Still in Use!



Place a stud in the hole provided on the circuit board



Carefully Pry the board loose, then remove

Differences from EDACS to P25

EDACS

- **Circuit-switched**
- **Analog voice/ Provoice digital/ EDACS proprietary data**
- **150 bits/sec low speed data**
- **96 kbaud modem interface to IMC/CEC switch**
- **Voice/data stream to/from Mastr III backplane.**
- **Daughtercard (R1) provides RF decode;.**

P25

- **IP-based packet-switched**
- **IMBE digital voice/ P25 standard data**
- **P25 voice/data packet structure includes Link Control Words**
- **IP interfaces (2) to several network devices**
- **Voice/data stream to/from the DSP module serially**
- **R2A daughtercard required for P25; now provides RF Transmit via the DSP.**

Differences from EDACS to P25

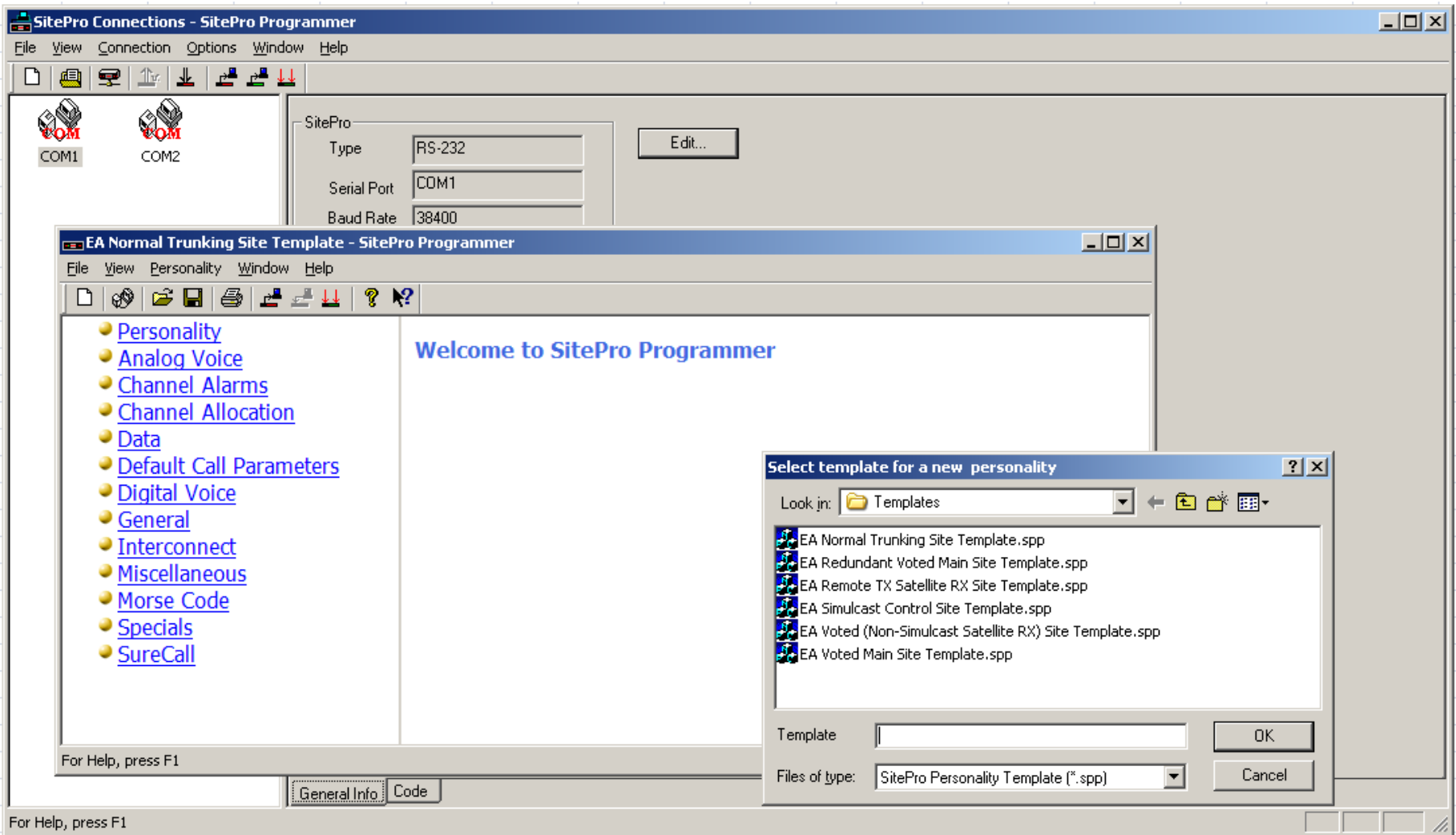
EDACS

- **Voter signals – Synchronous serial 9600 baud, separate voting hardware.**
- **Works with older Mastr III stations.**
- **Required SitePro Programmer to configure.**

P25

- **Voter signals – IP, no separate voting hardware needed.**
- **Requires Mastr III ADC station shelf (Advanced Digital Capable)**
- **Now requires Device Manager to configure.**

SitePro Programmer for EDACS



Device Manager Interface

The screenshot displays the Device Management Console interface. The main window is titled "Device Management Console" and contains a menu bar (File, Edit, View, Actions, Tools, Window, Help) and a toolbar with icons for Version, Read, Write, Reset, and Code. A "Restore Down" button is visible in the top right corner.

The interface is divided into several panes:

- Device Explorer:** Located on the left, it shows a tree view of the "Harris Training Network" with a sub-entry "r1" containing four sites: Site_1, Site_2, Site_3, and Site_4.
- Device Inventory:** The central pane displays a table with the following columns: Location, Name, Device Type, Hostname, IP Address, Serial Port, Unique ID, Last Modified, Last Modified Action, and Description. The table contains five rows of data:

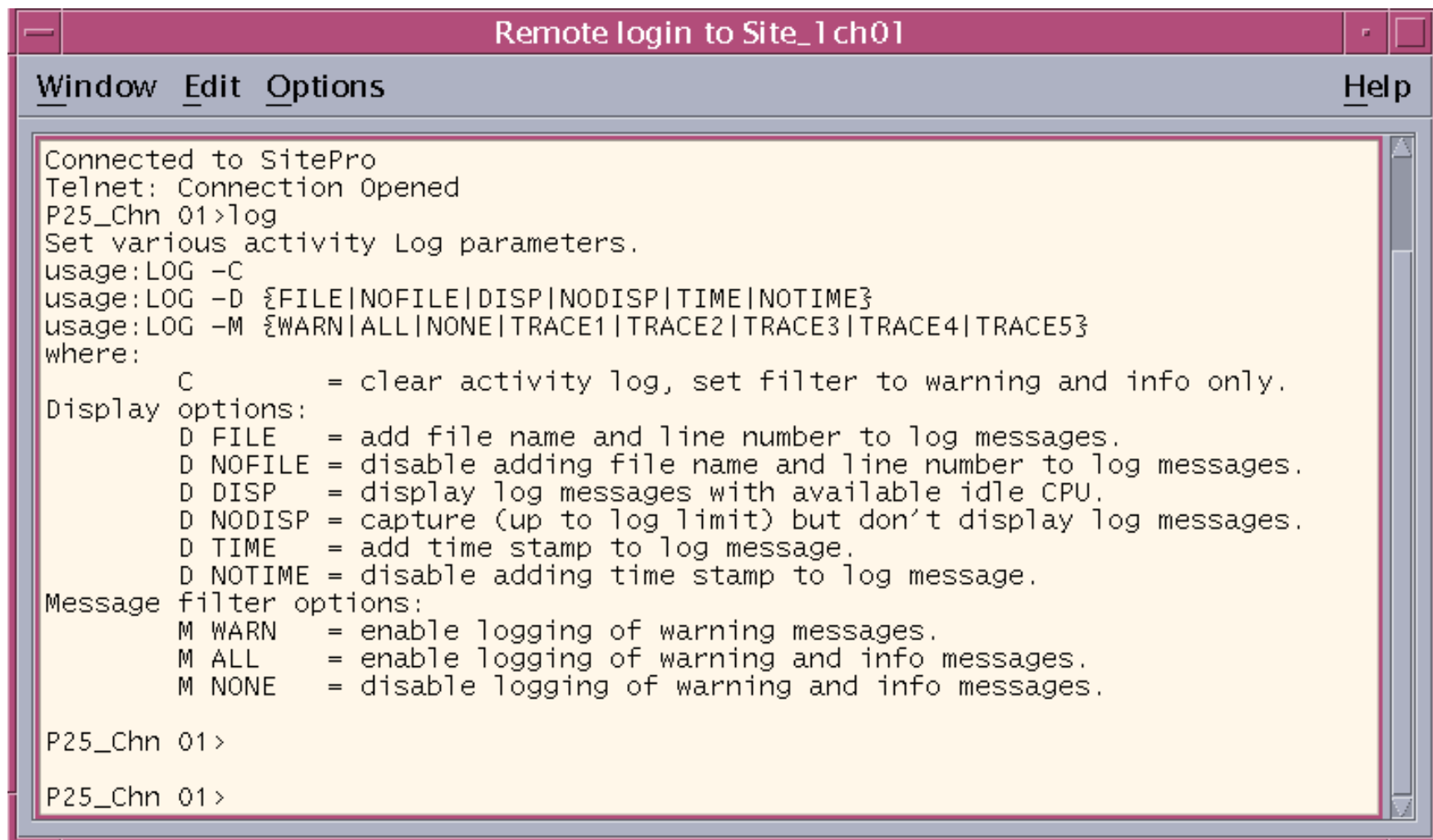
	Location	Name	Device Type	Hostname	IP Address	Serial Port	Unique ID	Last Modified	Last Modified Action	Description
1	Harris Training...		SiteLink SP	N/A	10.0.4.25	N/A				
2	Harris Training...	Site_1ch01	SitePro P25	N/A	10.0.4.1	N/A				
3	Harris Training...	Site_1ch02	SitePro P25	N/A	10.0.4.2	N/A				
4	Harris Training...	Site_1ch03	SitePro P25	N/A	10.0.4.3	N/A				
5	Harris Training...	Site_1sentry	NWS		10.0.4.29	N/A				

Below the Device Inventory table is a **Log Viewer** pane with a table for logging events:

Date/Time	Job Name	Task Name	Message

At the bottom of the console, there are tabs for "Infrastructure", "Subscribers", and "Type". Below these are icons for "Task Monitor" and "Log Viewer". The status bar at the very bottom indicates "Ready." and includes a small blue icon.

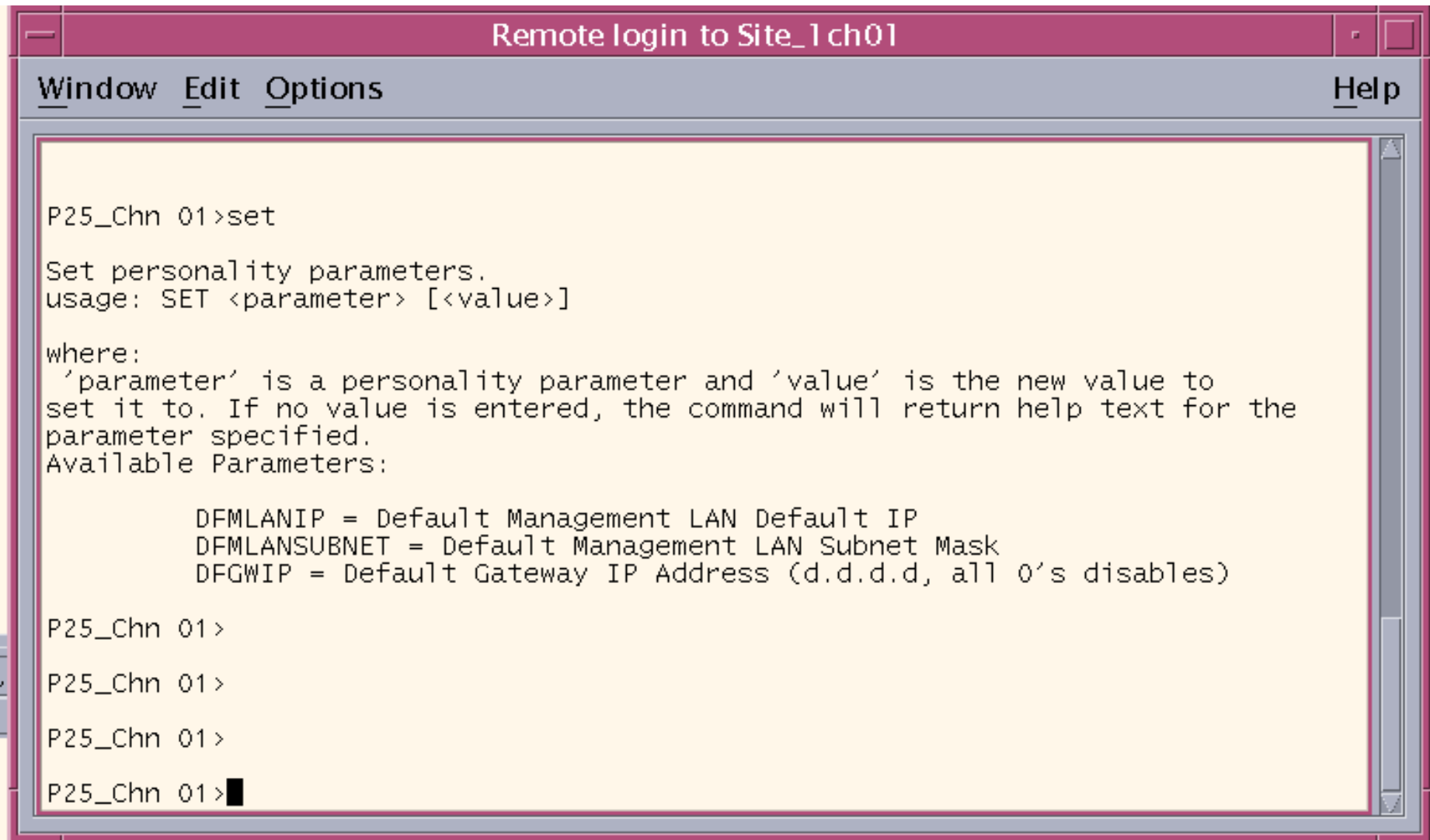
Remote or Local Logging



```
Remote login to Site_1 ch01
Window Edit Options Help
Connected to SitePro
Telnet: Connection Opened
P25_Chn 01>log
Set various activity Log parameters.
usage:LOG -C
usage:LOG -D {FILE|NOFILE|DISP|NODISP|TIME|NOTIME}
usage:LOG -M {WARN|ALL|NONE|TRACE1|TRACE2|TRACE3|TRACE4|TRACE5}
where:
    C          = clear activity log, set filter to warning and info only.
Display options:
    D FILE     = add file name and line number to log messages.
    D NOFILE  = disable adding file name and line number to log messages.
    D DISP    = display log messages with available idle CPU.
    D NODISP  = capture (up to log limit) but don't display log messages.
    D TIME    = add time stamp to log message.
    D NOTIME  = disable adding time stamp to log message.
Message filter options:
    M WARN    = enable logging of warning messages.
    M ALL     = enable logging of warning and info messages.
    M NONE    = disable logging of warning and info messages.

P25_Chn 01>
P25_Chn 01>
```

CLI Set Command Only Sets Up Lan Interface



The image shows a terminal window titled "Remote login to Site_1 ch01". The window has a menu bar with "Window", "Edit", "Options", and "Help". The terminal content shows a user entering the command "set" at the "P25_Chn 01" prompt. The terminal displays the following help text:

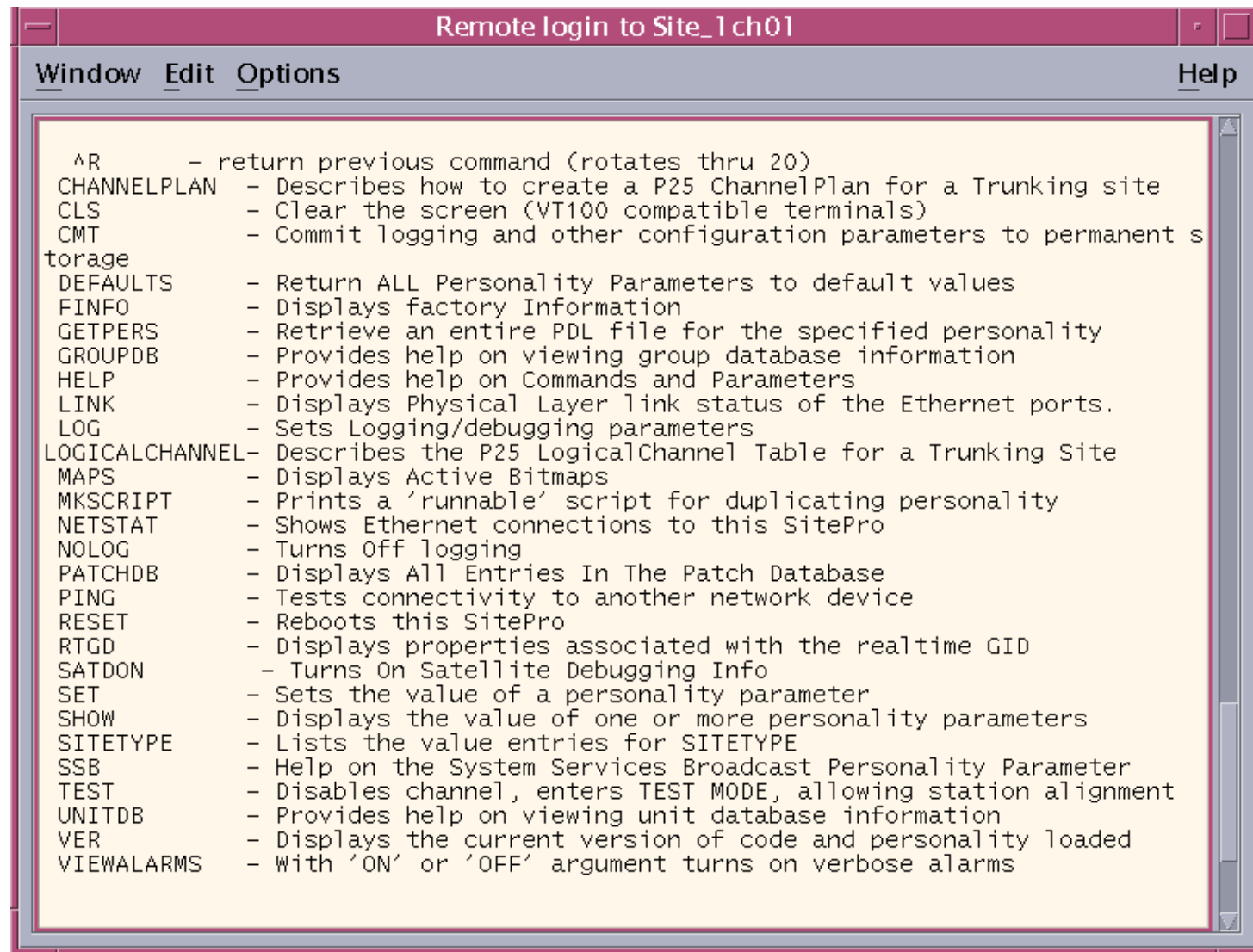
```
P25_Chn 01>set
Set personality parameters.
usage: SET <parameter> [<value>]

where:
'parameter' is a personality parameter and 'value' is the new value to
set it to. If no value is entered, the command will return help text for the
parameter specified.
Available Parameters:

    DFMLANIP = Default Management LAN Default IP
    DFMLANSUBNET = Default Management LAN Subnet Mask
    DFGWIP = Default Gateway IP Address (d.d.d.d, all 0's disables)

P25_Chn 01>
P25_Chn 01>
P25_Chn 01>
P25_Chn 01>█
```

Other CLI Commands Available



```
Remote login to Site_1 ch01
Window Edit Options Help
^R - return previous command (rotates thru 20)
CHANNELPLAN - Describes how to create a P25 ChannelPlan for a Trunking site
CLS - Clear the screen (VT100 compatible terminals)
CMT - Commit logging and other configuration parameters to permanent s
storage
DEFAULTS - Return ALL Personality Parameters to default values
FINFO - Displays factory Information
GETPERS - Retrieve an entire PDL file for the specified personality
GROUPDB - Provides help on viewing group database information
HELP - Provides help on Commands and Parameters
LINK - Displays Physical Layer link status of the Ethernet ports.
LOG - Sets Logging/debugging parameters
LOGICALCHANNEL - Describes the P25 LogicalChannel Table for a Trunking Site
MAPS - Displays Active Bitmaps
MKSCRIPT - Prints a 'runnable' script for duplicating personality
NETSTAT - Shows Ethernet connections to this SitePro
NOLOG - Turns Off logging
PATCHDB - Displays All Entries In The Patch Database
PING - Tests connectivity to another network device
RESET - Reboots this SitePro
RTGD - Displays properties associated with the realtime GID
SATDON - Turns On Satellite Debugging Info
SET - Sets the value of a personality parameter
SHOW - Displays the value of one or more personality parameters
SITETYPE - Lists the value entries for SITETYPE
SSB - Help on the System Services Broadcast Personality Parameter
TEST - Disables channel, enters TEST MODE, allowing station alignment
UNITDB - Provides help on viewing unit database information
VER - Displays the current version of code and personality loaded
VIEWALARMS - With 'ON' or 'OFF' argument turns on verbose alarms
```